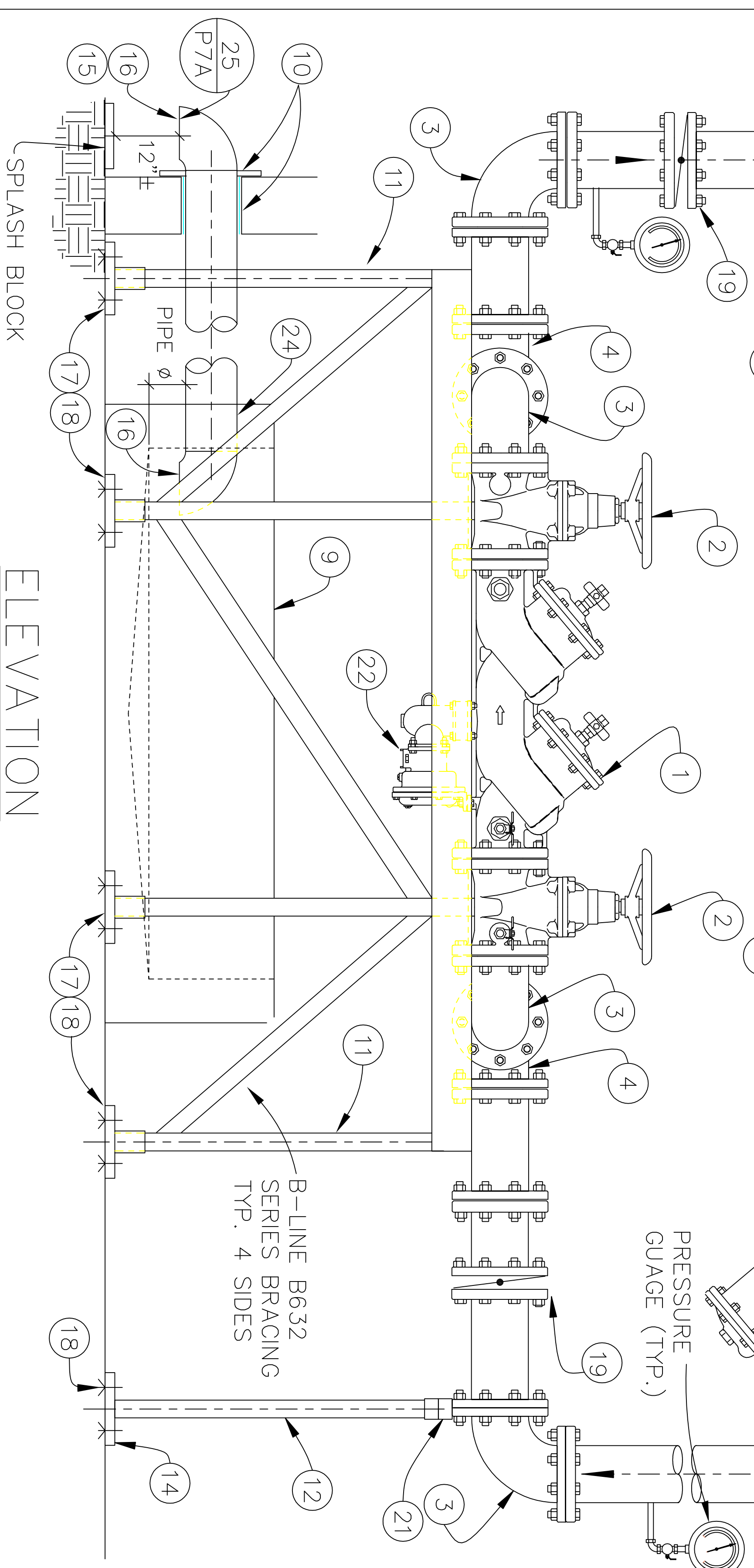


PLAN
NOT TO SCALE



ELEVATION
NOT TO SCALE

FLAG NOTES: ○

1. REDUCED PRESSURE BACKFLOW PREVENTER ASSEMBLY, EACH SIZED FOR 100% OF TOTAL DEMAND.
2. NON-RISING STEM GATE VALVE WITH SOFT SEATS FURNISHED WITH BACKFLOW PREVENTER.
3. FLANGED ELBOW.
4. FLANGED TEE.
5. FLANGED WYE STRAINER WITH PLUG.
6. BASIN DISCHARGE THRU EXTERIOR WALL. PIPING TO BE CAST IRON OR SCH. 40 STEEL. PROVIDE 90 DEG. FITTINGS AT BASIN AND EXTERIOR TERMINATION POINTS. WHERE NO-HUB PIPING IS USED, PUSH EXTERIOR CLAMP ONTO WALL AS FAR AS POSSIBLE TO AVOID VANDALISM.
7. NEW OR EXISTING DOMESTIC WATER ENTRY INTO BUILDING. VERIFY LOCATION & ELEVATION.
8. DOMESTIC WATER TO BUILDING FIXTURES.
9. RELIEF CONTAINMENT/WATER SENSOR BASIN. BASIN RIM HEIGHT WITHIN 18" FROM BOTTOM OF BACKFLOW DEVICE. SEE DETAIL ON DRAWING P.3.
10. SLEEVE THRU EXTERIOR WALL. PROVIDE "LINK-SEAL" AND GROUT/CAULK WATERTIGHT. PROVIDE CHROME ESCUTCHEON ON EXTERIOR PIPING, ANCHOR TO WALL.
11. B-LINE UNISTRUT SYSTEM, VERTICAL SUPPORTS-B22 MINIMUM. HORIZONTAL SUPPORTS-B11 MINIMUM. USE APPROPRIATE CORNER SUPPORT FITTINGS AND ANGLE BRACING.
12. PIPE SUPPORT OR PIPE STAND. 1½" DIA. STEEL PIPE MIN. SET PLUMB. PROVIDE ANGLE BRACING TO FLOOR. OPTION: UNISTRUT FRAME.
13. EXTEND 2" DIA. SUMP DRAIN TO FLOOR DRAIN. SEE FLOOR PLAN.
14. 6" x 6" x 3/8" FLOOR PLATE FOR PIPE STAND.
15. BRAZE (2) 1/4" STEEL DOWELS ACROSS OPENING IN A CROSSING PATTERN. PROVIDE 1/2" SIEVE S.S. VERMIN SCREEN TACK WELDED TO BARS. PAINT EXPOSED PIPING WITH 2 COATS OF BLACK ENAMEL.
16. TRIM APPROX. 2-1/2" OFF FITTING ON ENDS NOT CONNECTED TO PIPE THRU WALL (SHORTER TURN DOWN).
17. B-LINE POST BASE, B280SQ, 6"x6".
18. CONCRETE ANCHORS. 4 PER FLOOR PLATE.
19. WAFER CHECK VALVE WITH SOFT SEAT AND COMPANION FLANGES. MOUNT HORIZONTAL OR UPFLOW IN THE VERTICAL. PROVIDE 4 PIPE DIA. OF STRAIGHT PIPE ON EACH SIDE OF CHECK VALVE.
20. PROVIDE A NEW BUILDING (RESILIENT SEAT) N.R.S. SHUTOFF VALVE AT SERVICE ENTRY TO BUILDING AND DOWNSTREAM OF BFP'S AS INDICATED.
21. FLANGE SADDLE.
22. ATMOSPHERIC DISCHARGE
23. PROVIDE APPROPRIATE B-LINE PIPE ANCHOR.
24. REFER TO PLAN VIEW FOR ACTUAL LOCATION.
25. REFER TO DRAWING P.7A.

DRAWN: DPS		DENVER PUBLIC SCHOOLS DEPARTMENT OF FACILITIES MANAGEMENT BACKFLOW PREVENTER STANDARDS INTERIOR INSTALLATION REDUCED PRESSURE BFP WITH DRAIN THRU EXTERIOR WALL DETAIL					
CHECKED: DPS							
APPROVED: DPS							
DATE: rev 9-23-05							
SCALE: NONE							
DWG. NO.	15431-P07	REV.	0	SHEET:	7	OF:	12