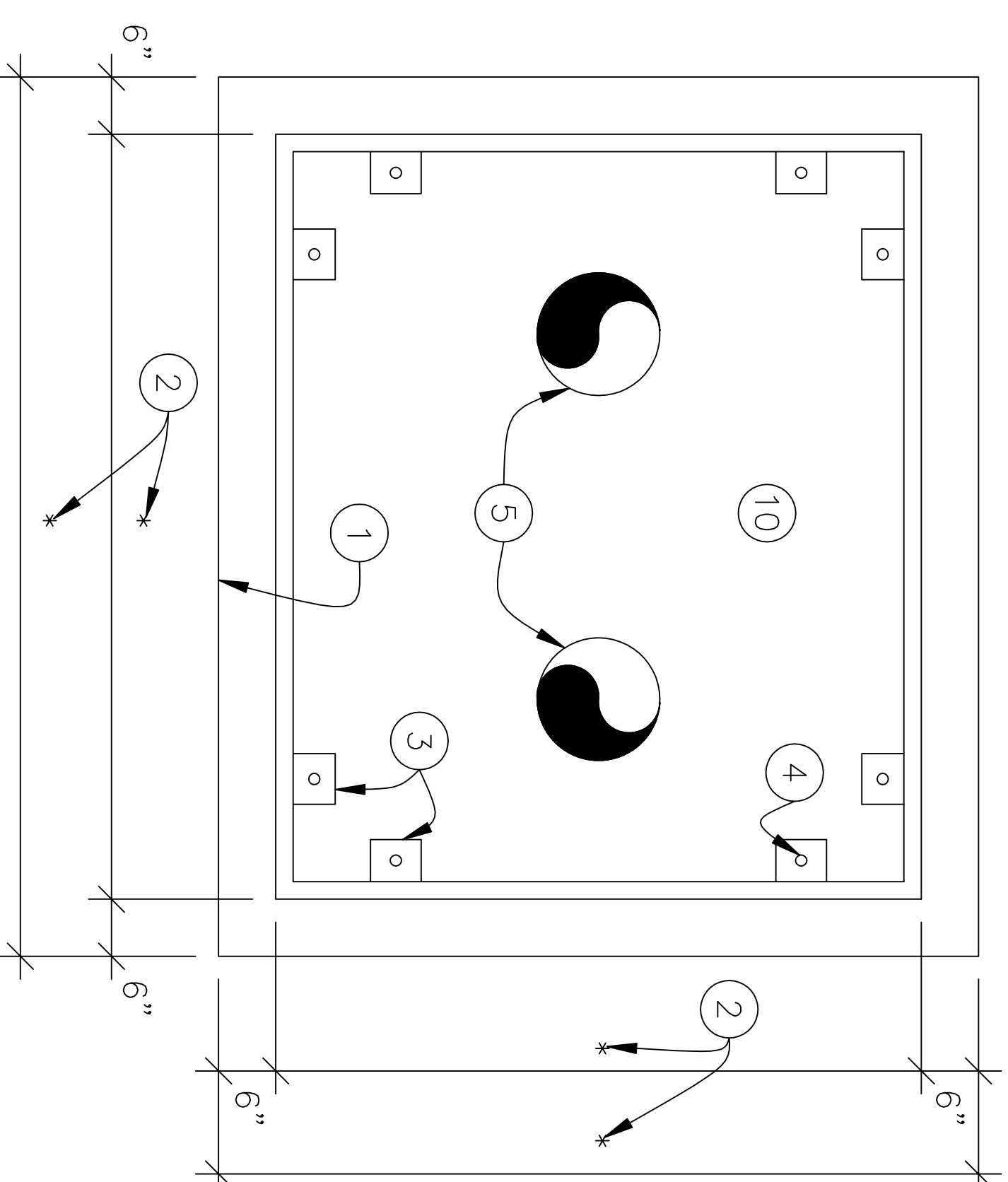
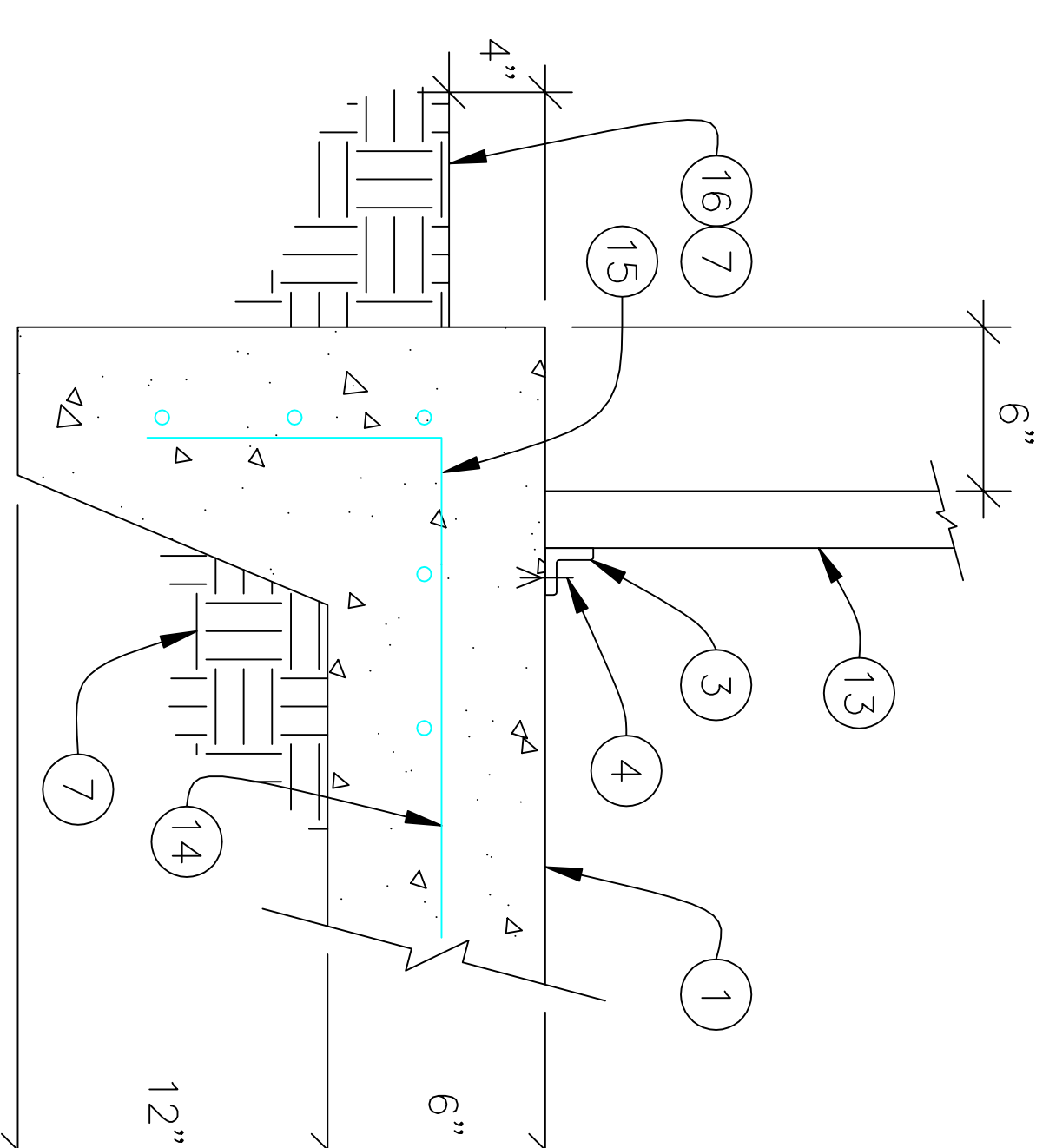


PLAN
STRONG BOX PAD
NOT TO SCALE



PLAN
HOT BOX PAD
NOT TO SCALE



PERIMETER
SLAB DETAIL
NOT TO SCALE

FLAG NOTES: ○

1. BACKFLOW PREVENTER "HOT BOX" REINFORCED CONCRETE PAD.
2. SIZE OF PAD TO BE DETERMINED BY ENCLOSURE SELECTED.
3. ENCLOSURE ANCHORS AS RECOMMENDED BY "HOT BOX" MANUFACTURER. 3"x3"x1/4" ANGLE IRON DRILLED FOR 1/2"Ø BOLT.
4. ANCHOR CLIPS ATTACHED TO CONCRETE PAD WITH 1/2"Ø STAINLESS STEEL CONCRETE ANCHORS.
5. PVC PIPE SLEEVE TO BELOW MINIMUM FROST LINE. SLEEVE TO EXTEND SIX (6) INCHES ABOVE PAD. SEAL AROUND SLEEVE WITH SILICONE SEALANT. SLEEVE TO REMAIN OPEN AT TOP AROUND PIPE FOR AIR CIRCULATION.
6. BACKFLOW PREVENTER STRONG BOX PAD.
7. BACK FILL SHALL BE COMPACTED IN 8" LIFTS TO 95% PROCTOR DENSITY TO FINISHED GRADE.
8. ENCLOSURE, ANCHOR TO SLAB WITH S.S. BOLTS AND CONCRETE ANCHORS AS RECOMMENDED BY STRONG BOX MANUFACTURER.
9. ANCHOR CLIPS ATTACH TO CONCRETE PAD WITH STAINLESS STEEL TAMPER PROOF CONCRETE ANCHORS.
10. HOT BOXES SHALL BE INSULATED AND BE EQUIPPED WITH A REDUNDANT ELECTRIC HEATER, A TEMPERATURE MONITOR AND A REMOTE TEMPERATURE ALARM WIRED TO DPS SECURITY ALARM SYSTEM. HOT BOX MATERIAL TO BE HEAVY WEIGHT 14 GAUGE ALUMINUM.
11. STRONG BOXES SHALL NOT BE INSULATED. PROVIDE BPD1 "GUARDSHACK" GS SERIES UNIT TO FIT APPLICATION.
12. PVC PIPE SLEEVES THROUGH CONCRETE PAD FOR WATER PIPES.
13. "HOT BOX" OR "STRONG BOX." (HOT BOX SHOWN)
14. CONCRETE PADS SHALL BE REINFORCED WITH #4 BARS, 6" ON CENTER, EACH WAY.
15. #4 BARS SHALL BE LAP SPLICED MINIMUM 20 DIAMETERS.
16. FINISHED GRADE.

DRAWN: DPS		DENVER PUBLIC SCHOOLS DEPARTMENT OF FACILITIES MANAGEMENT BACKFLOW PREVENTER STANDARDS HOT BOX AND STRONG BOX INSTALLATION DETAIL	
CHECKED: DPS			
APPROVED: DPS			
DATE: 11/20/03			
SCALE: NONE			
DWG. NO.	REV.	SHEET:	
15431-P10	0	10	12
		OF:	