

NOTE:
 SENSOR WIRES ARE NOT TO BE CRIMPED BY FASTENERS

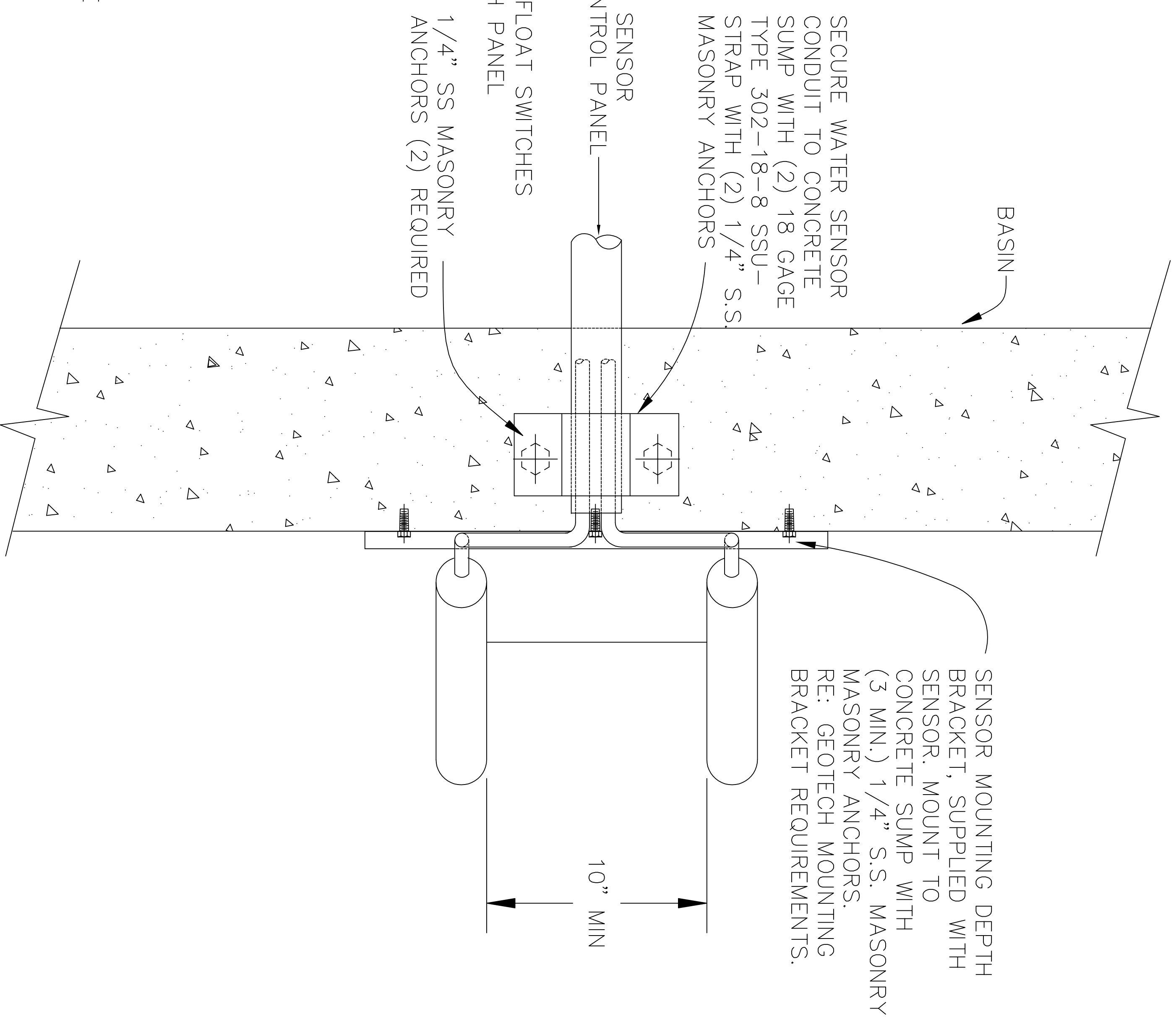
LOCATE SENSORS ON ONE OF 3 SIDES WHERE DRAIN IS NOT LOCATED

FLOOR
 MOUNT PRE-DRILLED SENSOR MOUNTING PLATE FLUSH WITH BOTTOM OF BASIN. RE: GEOTECH MOUNTING BRACKET REQUIREMENTS.

WATER SENSOR

POSITIONING DETAIL – ELEVATION VIEW

NOT TO SCALE



SENSOR MOUNTING DEPTH BRACKET, SUPPLIED WITH SENSOR. MOUNT TO CONCRETE SUMP WITH (3 MIN.) 1/4" S.S. MASONRY ANCHORS. RE: GEOTECH MOUNTING BRACKET REQUIREMENTS.

CONDUIT AND SENSOR WIRES TO CONTROL PANEL PROVIDED WITH PANEL
 WATER LEVEL FLOAT SWITCHES
 1/4" SS MASONRY ANCHORS (2) REQUIRED

WATER SENSOR

POSITIONING DETAIL – PLAN VIEW

NOT TO SCALE

DENVER PUBLIC SCHOOLS DEPARTMENT OF FACILITIES MANAGEMENT	
DRAWN: DPS CHECKED: DPS APPROVED: DPS DATE: 11/20/03 SCALE: NONE	DWG. NO. 15431-P2
BACKFLOW PREVENTER STANDARDS ANTI-FLOOD SYSTEM WATER SENSOR PLACEMENT DETAIL	
REV. 0	SHEET: 2 OF 12