

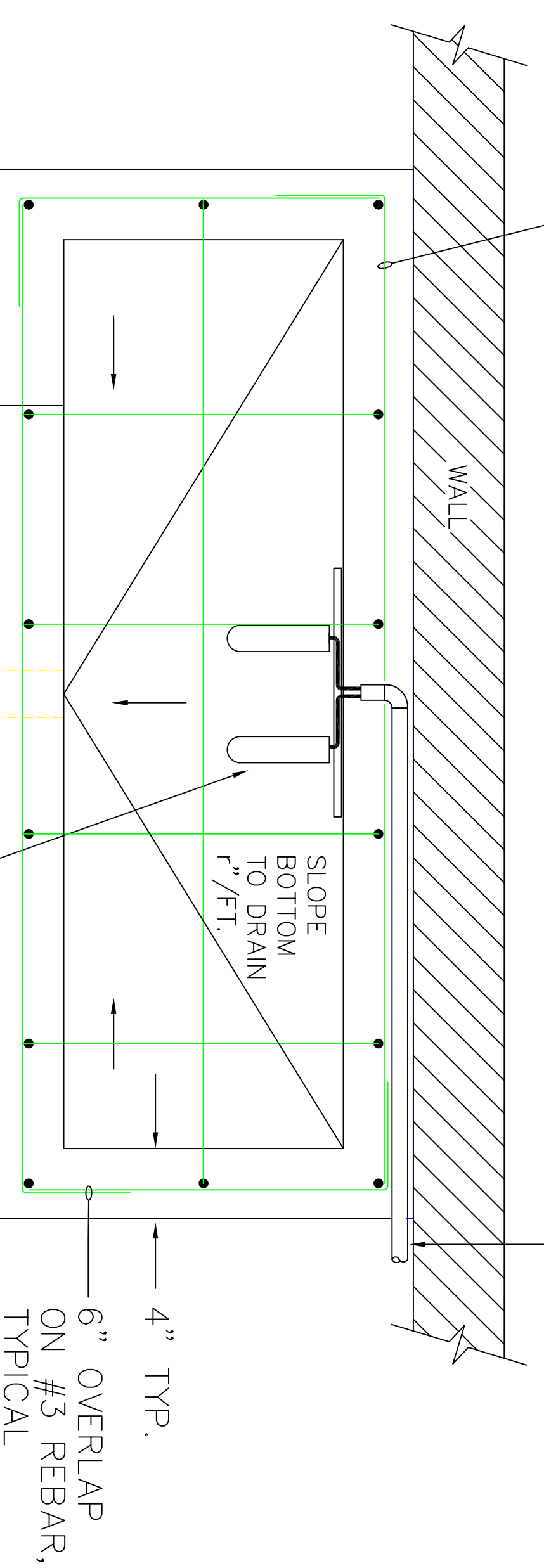
CONTAINMENT BASIN SIZING GUIDE – MIN. DIM.

DOM. WATER MAIN SIZE	LENGTH "A"	WIDTH "B"	REMARKS
5	1	2	
2	24"	38"	3 4
2-1/2"	42"	40"	3
3"	42"	44"	3
4"	48"	50"	3

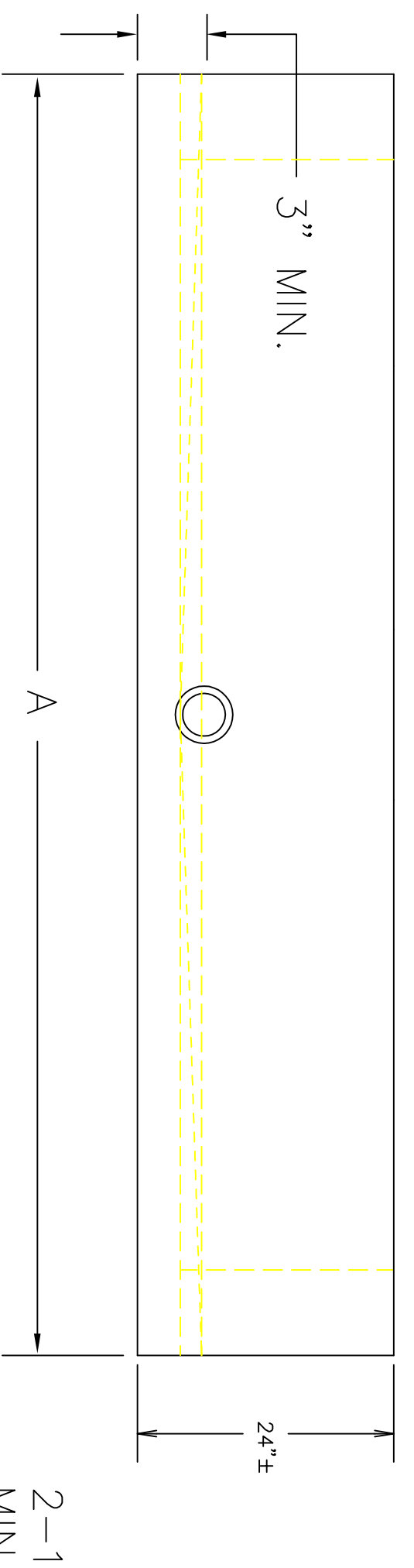
- 1 LENGTH = DIM. FROM OUTSIDE EDGE OF GATE VALVES.
- 2 WIDTH = DIM. FROM OUTSIDE EDGES OF BFP PLUS 6" EACH SIDE.
- 3 INSIDE BASIN DIMENSIONS INDICATED.
- 4 BALL VALVES WITH UNIONS MAYBE USED ON 2" AND SMALLER BFP'S.
- 5 MODIFY BASIN INSTALLATIONS TO ALLOW 6" CLEAR AROUND BFP AS REQUIRED.

#3 REBAR, 12" O.C. EACH WAY, INTERLOCK WITH VERTICAL DOWELS.

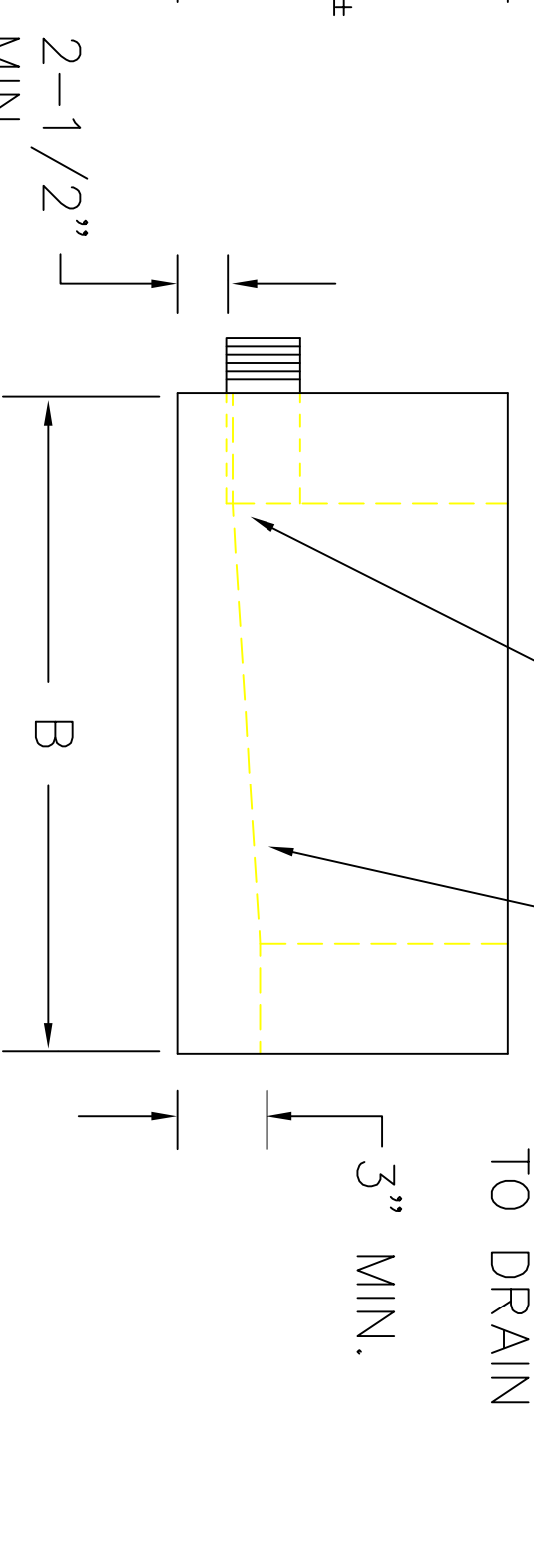
SENSOR CONTROL WIRING IN CONDUIT TO CONTROL PANEL



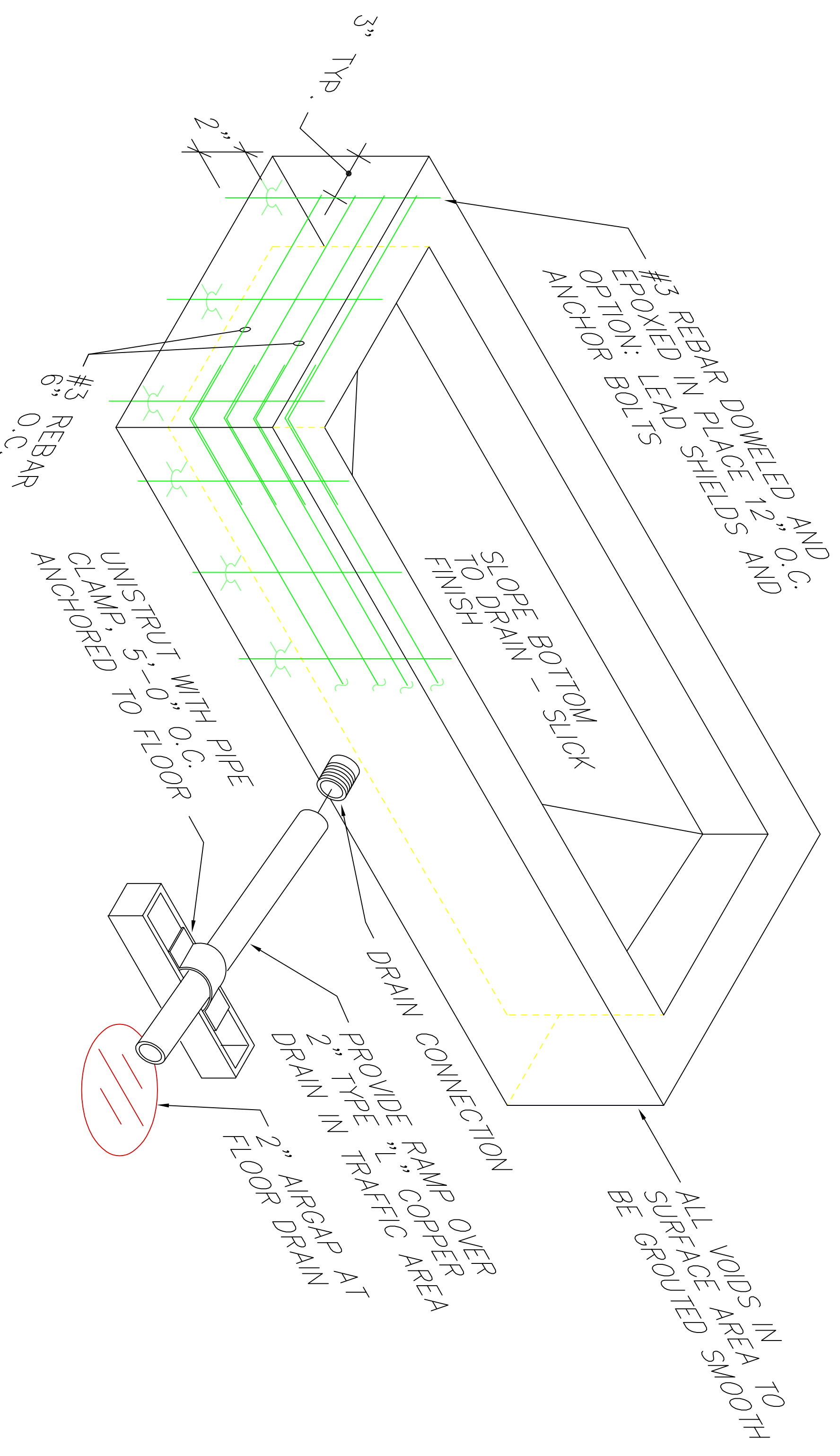
PLAN VIEW



ELEVATION VIEWS



PLACE DRAIN INVERT AT FLOOR OF BASIN (NO STANDING WATER ALLOWED)



ISOMETRIC VIEW

SENSOR PLACEMENT NOTE:

1. FLOAT SENSOR SHOULD BE LOCATED ON BASIN WALL OPPOSITE THE 2" DRAIN OR ON ONE OF THE ADJACENT BASIN WALLS.

CONTAINMENT BASIN MATERIAL AND NOTES:

1. 6 SACK CONCRETE/YD, 3/4" ROCK, 5% AIR, 3" SLUMP, 3000 PSI MIN. COMPRESSION STRENGTH @ 28 DAYS
2. POUR BASIN BOTTOM AND SIDES MONOLITHIC.
3. HORIZONTAL REBAR TO BE 6" O.C. ON ALL 4 SIDES TIED TO VERTICAL DOWELS.
4. TOOL ALL TOP EXPOSED EDGES OF BASIN.

CONTAINMENT/SENSOR BASIN DETAIL

NOT TO SCALE

DENVER PUBLIC SCHOOLS DEPARTMENT OF FACILITIES MANAGEMENT		DWG. NO. 15431-P03	
DRAWN: DPS CHECKED: DPS APPROVED: DPS DATE: 11/20/03 SCALE: NONE	BACKFLOW PREVENTER STANDARDS ANTI-FLOOD SYSTEM CONTAINMENT/SENSOR BASIN DETAIL		
SHEET: 3 OF 12	REV. 0	REV.	REV.